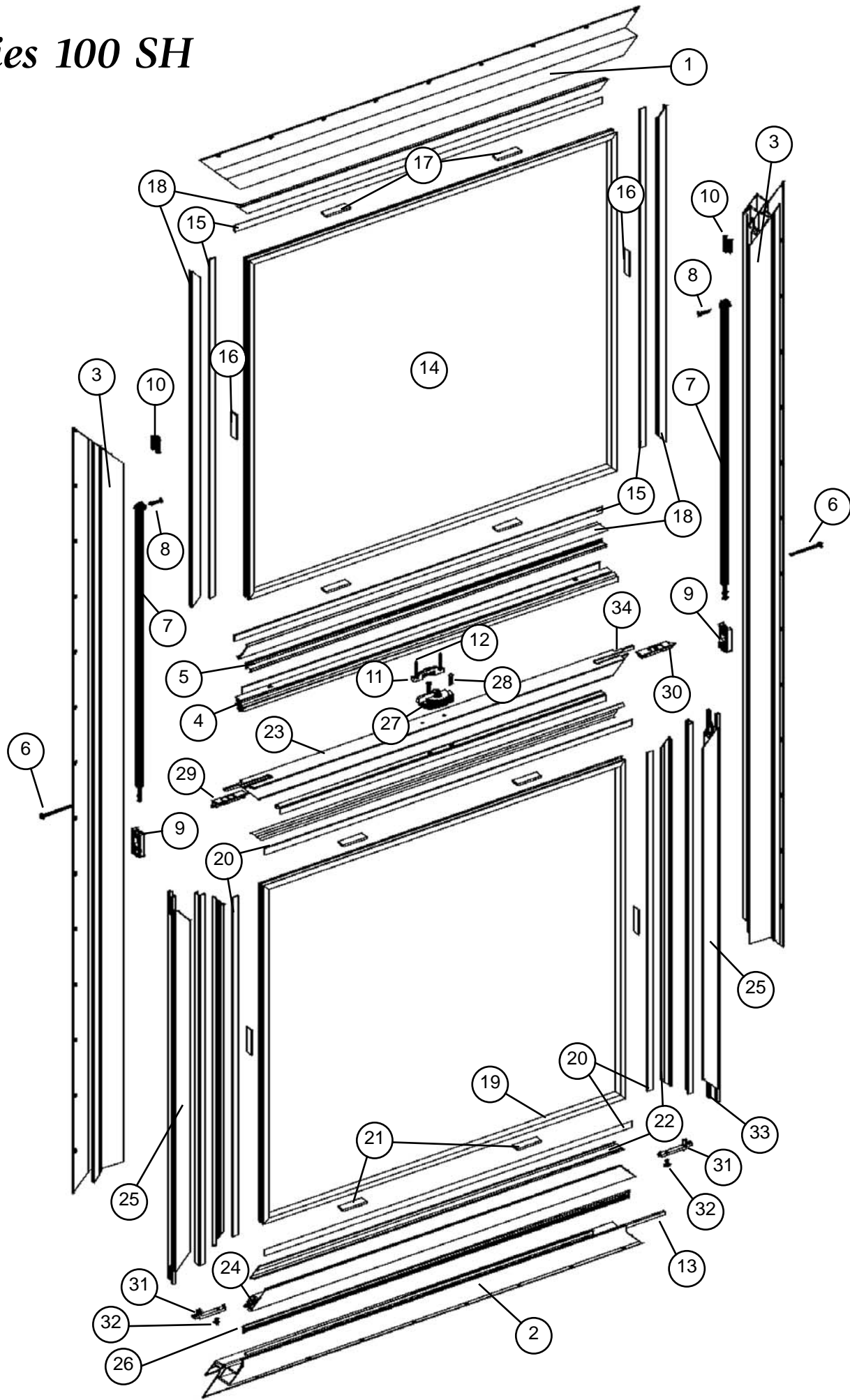


Series 100 SH



Series 100 SH

Frame

- 1 .....Head
- 2 .....Sill
- 3 .....Jamb
- 4 .....Meeting Rail
- 5 .....Meeting Rail Rebar
- 6 .....Meeting Rail Screw
- 7 .....Spiral Balance
- 8 .....Balance Screw
- 9 .....Balance Shoe
- 10 .....Sash Stop
- 11 .....Keeper
- 12 .....Keeper Screw
- 13 .....Woolpile

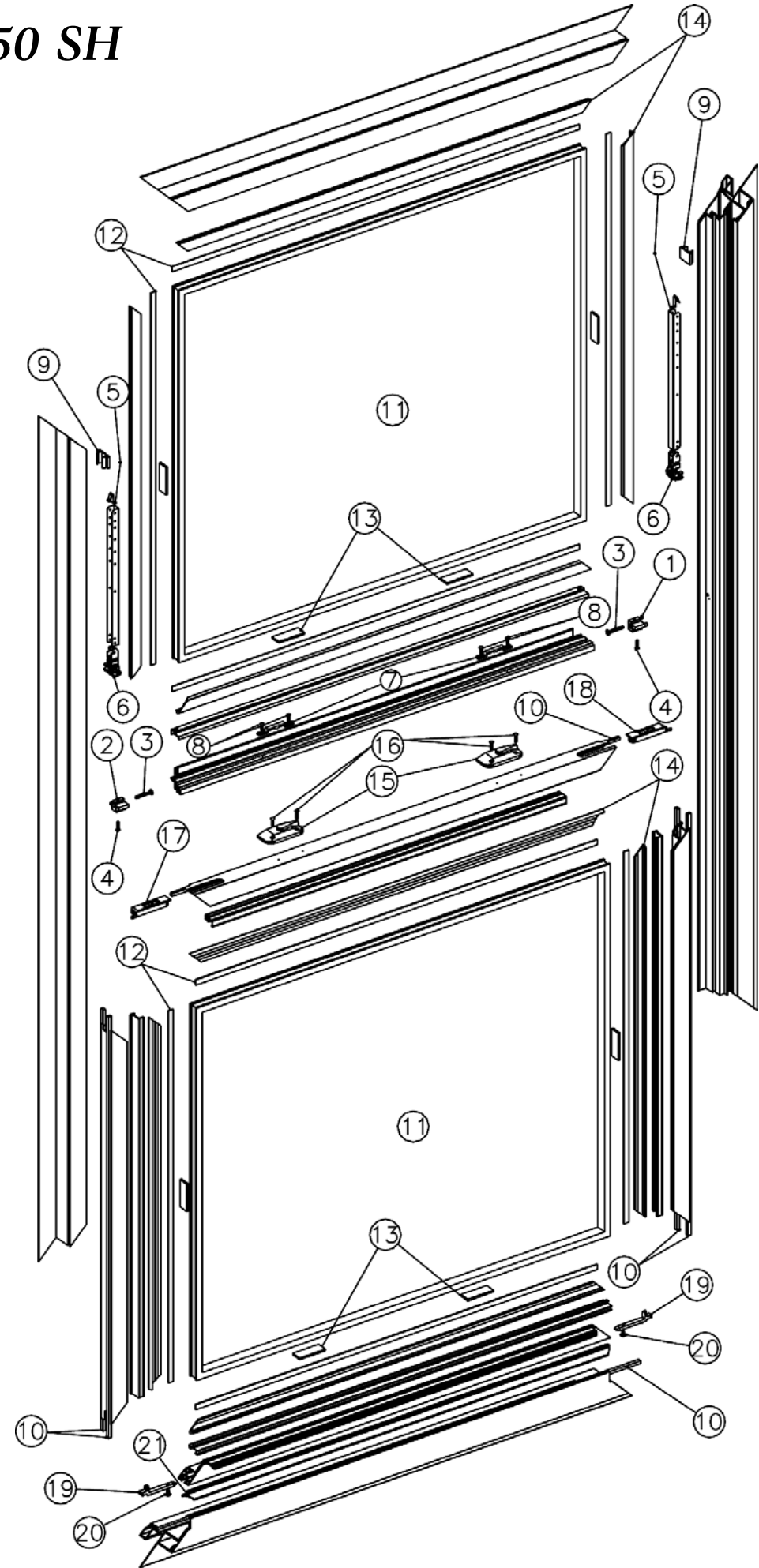
Fixed Glass Panel

- 14 .....Insulated Glass Panel
- 15 .....Glazing Tape
- 16 .....Glazing Block
- 17 .....Glazing Block
- 18 .....Glazing Bead

Lock Sash

- 19 .....Insulated Glass Panel
- 20 .....Glazing Tape
- 21 .....Glazing Block
- 22 .....Glazing Bead
- 23 .....Lock Rail
- 24 .....Bottom Rail
- 25 .....Stile
- 26 .....Bulb Seal
- 27 .....Lock
- 28 .....Lock Screw
- 29 .....Tilt Latch - Right
- 30 .....Tilt Latch - Left
- 31 .....Pivot Bars
- 32 .....Pivot Bar Screw
- 33 .....Woolpile
- 34 .....Woolpile Lock Rail

Series 150 SH



Series 150 SH

Frame

- 1 .....Right Block
- 2 .....Left Block
- 3 .....Jamb/Block Screw
- 4 .....Meeting Rail/Block Screw
- 5 .....Block & Tackle
- 6 .....Balance Shoe
- 7 .....Keeper
- 8 .....Keeper Screw
- 9 .....Sash Stop
- 10 .....Woolpile

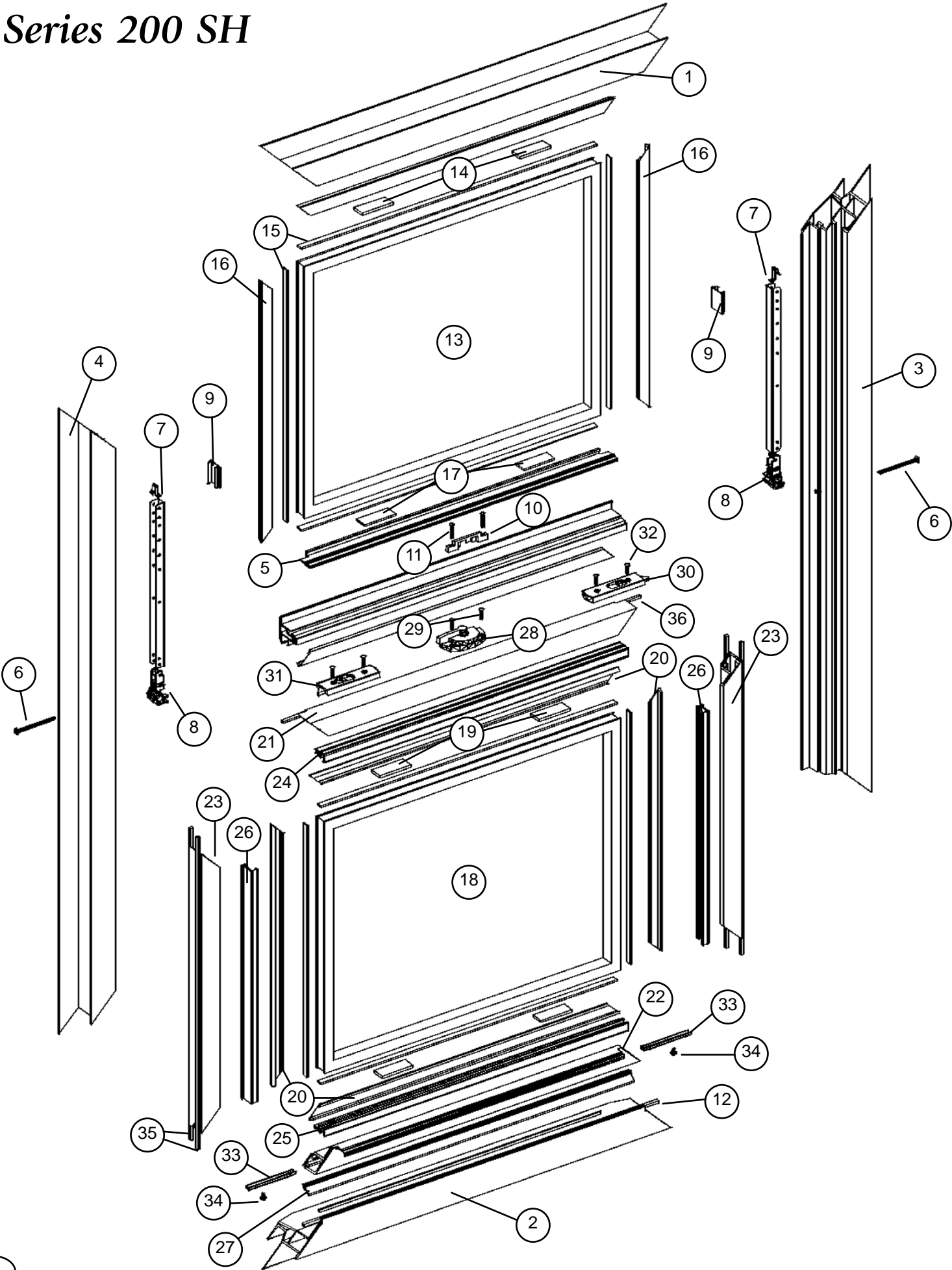
Fixed Glass Panel

- 11 .....Insulated Glass Panel
- 12 .....Glazing Tape
- 13 .....Glazing Block
- 14 .....Glazing Bead

Lock Sash

- 11 .....Insulated Glass Panel
- 12 .....Glazing Tape
- 13 .....Glazing Block
- 14 .....Glazing Bead
- 15 .....Lock
- 16 .....Lock Screw
- 17 .....Tilt Latch Right
- 18 .....Tilt Latch Left
- 19 .....Pivot Bar
- 20 .....Pivot Bar Screw
- 21 .....Sash Seal
- 10 .....Woolpile
- 22 .....Woolpile

Series 200 SH



Series 200 SH

Frame

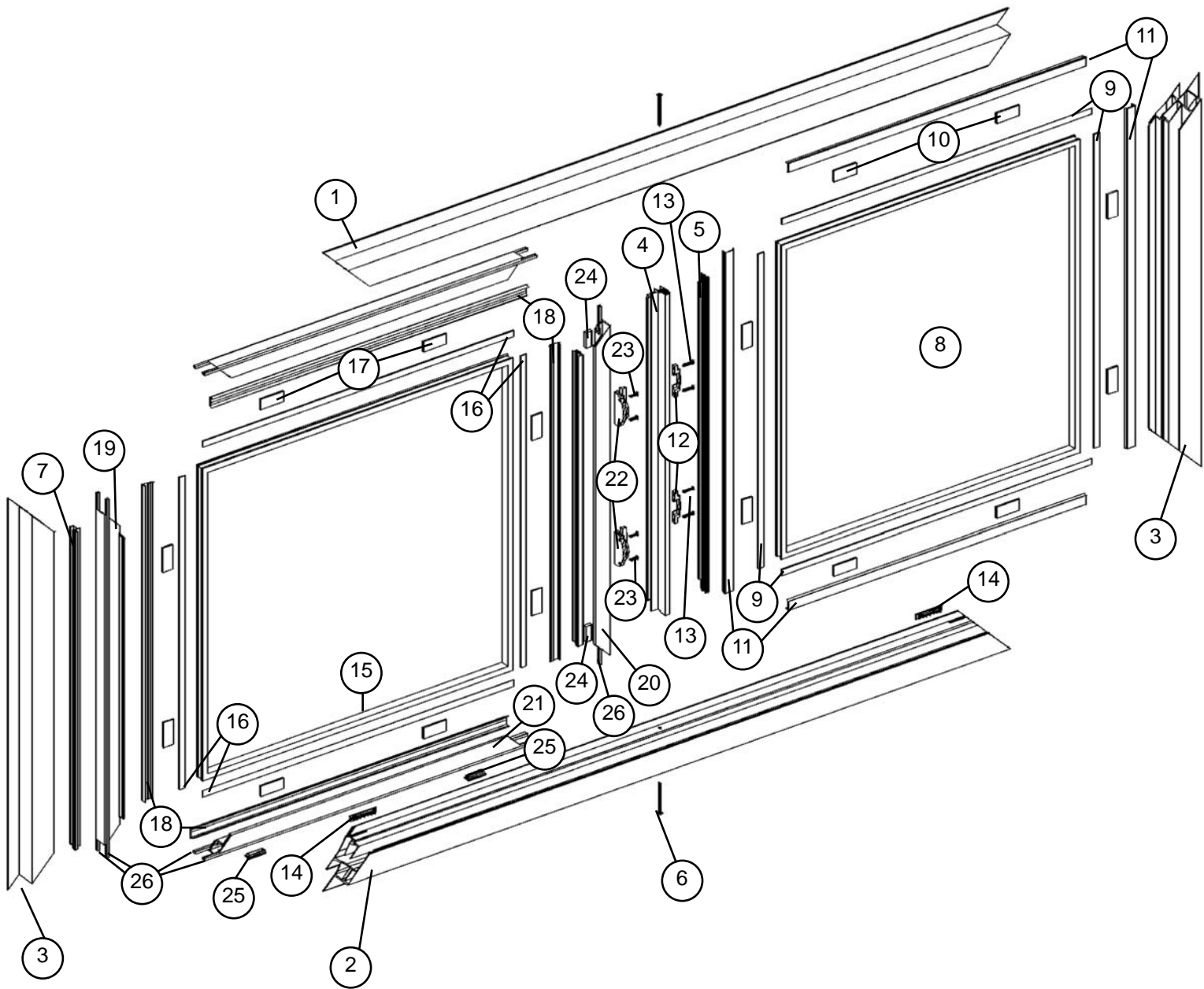
- 1 .....Head
- 2 .....Sill
- 3 .....Jamb
- 4 .....Fixed Meeting Rail
- 5 .....Fixed Meeting Rail Rebar
- 6 .....Frame Screw
- 7 .....Block & Tackle Balance
- 8 .....Balance Shoe
- 9 .....Sash Stop
- 10 .....Keeper
- 11 .....Keeper Screw
- 12 .....Woolpile

Fixed Glass Panel

- 13 .....Insulated Glass Panel
- 14 .....Glazing Block
- 15 .....Glazing Tape
- 16 .....Glazing Bead
- 17 .....Glazing Block

Lock Sash

- 18 .....Insulated Glass Panel
- 19 .....Glazing Block
- 20 .....Glazing Bead
- 21 .....Lock Rail
- 22 .....Lift Rail
- 23 .....Stile
- 24 .....Lock Rail Rebar
- 25 .....Lift Rail Rebar
- 26 .....Stile Rebar
- 27 .....Seal
- 28 .....Lock
- 29 .....Lock Screw
- 30 .....Tilt Latch - Right
- 31 .....Tilt Latch - Left
- 32 .....Tilt Latch Screw
- 33 .....Tilt Pin
- 34 .....Tilt Pin Screw
- 35 .....Woolpile
- 36 .....Woolpile Lock Rail



**Frame**

- 1. . . . . Head
- 2. . . . . Sill
- 3. . . . . Jamb
- 4. . . . . Meeting Rail
- 5. . . . . Meeting Rail Rebar
- 6. . . . . Meeting Rail Screw
- 7. . . . . Screen Snap In
- 8. . . . . Insulated Glass Panel
- 9. . . . . Glazing Tape
- 10. . . . . Glazing Block
- 11. . . . . Glazing Bead
- 12. . . . . Keeper
- 13. . . . . Keeper Screw
- 14. . . . . Weephole Cover

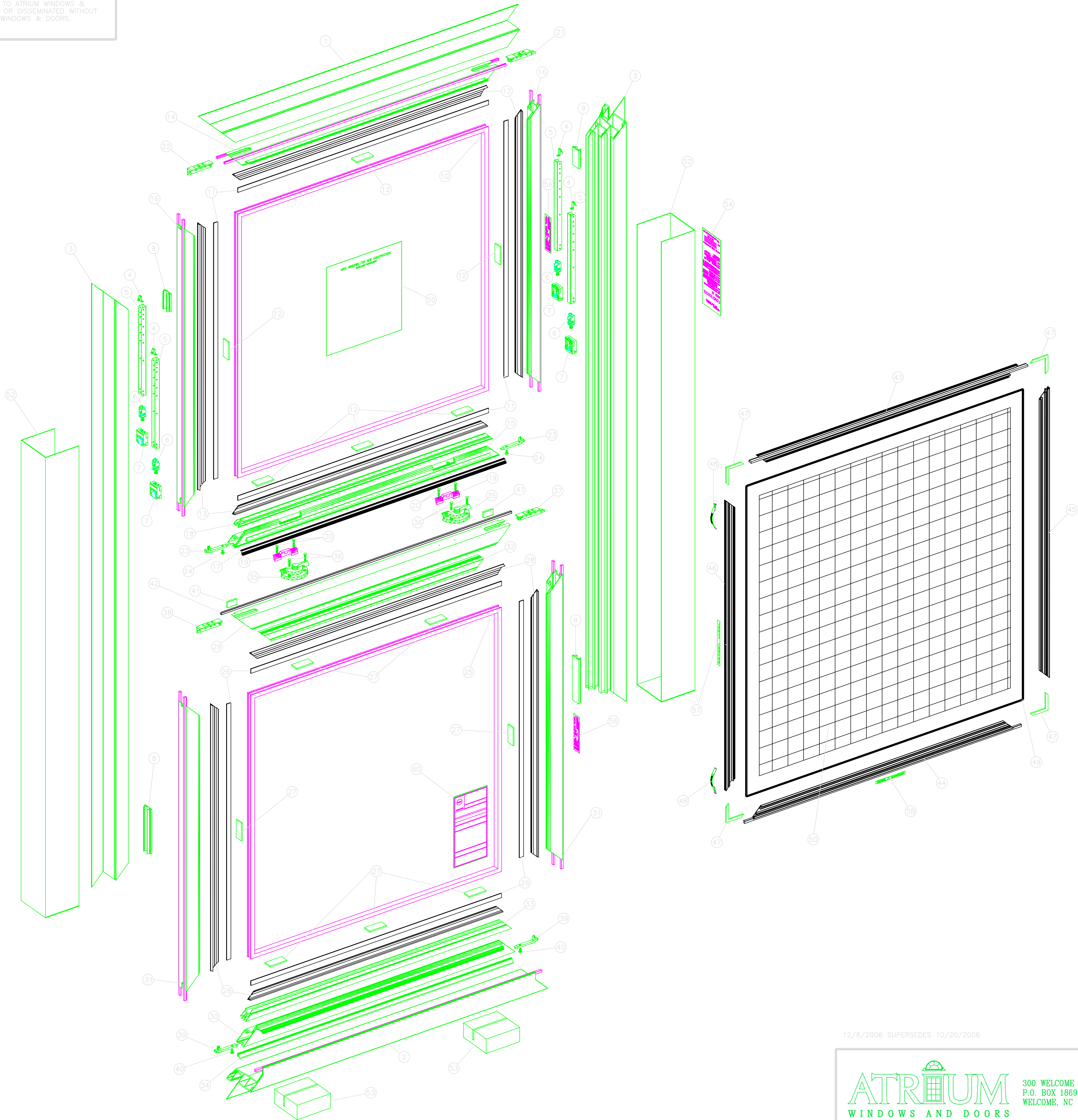
**Lock Sash**

- 15. . . . . Insulated Glass Panel
- 16. . . . . Glazing Tape
- 17. . . . . Glazing Block
- 18. . . . . Glazing Bead
- 19. . . . . Lock Sash Lift Rail
- 20. . . . . Lock Rail
- 21. . . . . Lock Sash Stile
- 22. . . . . Lock
- 23. . . . . Lock Screw
- 24. . . . . Dust Plug
- 25. . . . . Rollers
- 26. . . . . Woolpile

Not Shown: Anti-Tilt Pads



THIS DRAWING IS PROPRIETARY AND CONFIDENTIAL TO ATRIUM WINDOWS & DOORS AND SHALL NOT BE REPRODUCED, COPIED OR DISSEMINATED WITHOUT THE EXPRESSED WRITTEN PERMISSION OF ATRIUM WINDOWS & DOORS.



NO.	DESCRIPTION	QUAN.
FRAME		
1	HEAD	1
2	SILL WITH 200-250SB (6060001825) WOOLPILE; STAND BY 187-250 (6060000250) HAND PULL	1
3	JAMB	2
4	INVERTED BLOCK & TACKLE <b>CLIP</b>	4
5	INVERTED BLOCK & TACKLE <b>REVERSE LACED</b>	4
6	SWIVEL LINK (523)	4
7	BALANCE SHOE (765)	4
8	KEEPER SASH STOP (5"AT SILL )	2
9	LOCK SASH STOP (2" AT HEAD)	2
KEEPER SASH		
10	INSULATED GLASS PANEL	1
11	GLAZING TAPE 1/2 X 1/16	PER SIZE
12	GLAZING BLOCK (2X 7/8"X1/8") <b>OR</b>	5/6 PER SIZE
	GLAZING BLOCK (2X 7/8"X1/16") <b>AS NEEDED</b>	
13	GLAZING BEAD	4
14	KEEPER SASH LIFT RAIL WITH 200-190SB (6060190200) WOOLPILE; STAND BY 187-190 (6060000190) HAND PULL	1
15	KEEPER RAIL (1 KEEPER WINDOWS LESS THAN 27 1/4")	1
	KEEPER RAIL (2 KEEPERS WINDOWS 27 1/4" OR GREATER IN WIDTH)	1
16	STILE WITH 200-250SB (6060001825) WOOLPILE; STAND BY 187-250 (6060000250) HAND PULL	2
17	BULBSEAL	1
18	KEEPER RAIL REBAR	1
19	1 KEEPER ( WINDOWS LESS THAN 27 1/4")	1
	2 KEEPERS ( WINDOWS 27 1/4" OR GREATER IN WIDTH)	2
20	KEEPER SCREW 2 PER LOCK (8A X 3/4" PFH #6HD)	PER SIZE
21	TILT LATCH - LEFT	1
22	TILT LATCH -RIGHT	1
23	PIVOT BAR	2
24	PIVOT BAR SCREW (8A X 3/8 PTH)	2
LOCK SASH		
25	INSULATED GLASS PANEL	1
26	GLAZING TAPE 1/2 X 1/16	PER SIZE
27	GLAZING BLOCK (2X 7/8"X1/8") <b>OR</b>	5/6/7 PER SIZE
	GLAZING BLOCK (2X 7/8"X1/16") <b>AS NEEDED</b>	
28	GLAZING BEAD	4
29	LOCK RAIL(1 LOCK WINDOWS LESS THAN 27 1/4")	1
	LOCK RAIL (2 LOCK WINDOWS 27 1/4" OR GREATER IN WIDTH)	1
30	LOCK SASH LIFT RAIL	1
31	LOCK SASH STILE WITH 200-250SB (6060001825) WOOLPILE; STAND BY 187-250 (6060000250) HAND PULL	2
32	LOCK RAIL REBAR	1
33	LIFT RAIL REBAR	1
34	LOCK SASH SEAL	1
35	1 LOCK ( WINDOWS LESS THAN 27 1/4" IN WIDTH )	1
	2 LOCKS ( WINDOWS 27 1/4" OR GREATER IN WIDTH)	2
36	LOCK SCREW (8A X 3/4" PFH) (2 PER LOCK)	PER SIZE
37	TILT LATCH - LEFT (FLUSH)	1
38	TILT LATCH - RIGHT (FLUSH)	1
39	PIVOT BAR	2
40	PIVOT BAR SCREW (8A X 3/8 PTH)	2
41	DUST PLUG	2
42	LOCK RAIL WOOLPILE (190-187GIF)	1
STANDARD HALF SCREEN		
43	TOP RAIL WITH 380-187 (6060003802) WOOLPILE	1
44	BOTTOM RAIL WITH 250-187 (6060002502) WOOLPILE	1
45	STILE RIBBED	1
46	STILE	1
47	SCREEN CORNER	4
48	SCREEN SPRINGS	2
49	SPLINE (165 T-SPLINE)	PER SIZE
50	SCREEN MESH	PER SIZE
PACKAGING		
51	STRETCH WRAP (NOT SHOWN)	PER SIZE
52	PROTECTIVE SLEEVE ( UP TO 70" WH) <b>OR</b> PROTECTIVE SLEEVE ( MORE THAN 70" WH) <b>AS NEEDED</b>	2
53	BUILT UP BLOCK (4 X 4 X 1.625)	2
54	BAR CODE LABEL	1
55	PRODUCT LABEL	PER
56	GLASS LABEL	2
57	SCREEN LABEL	1
58	SCREEN WARNING LABEL	1
59	AAMA LABEL (SILVER)	1
60	ENERGY STAR/NFRC LABEL	1
61	RUBBER BAND (NOT SHOWN)	1

12/8/2006 SUPERSEDES 10/20/2006

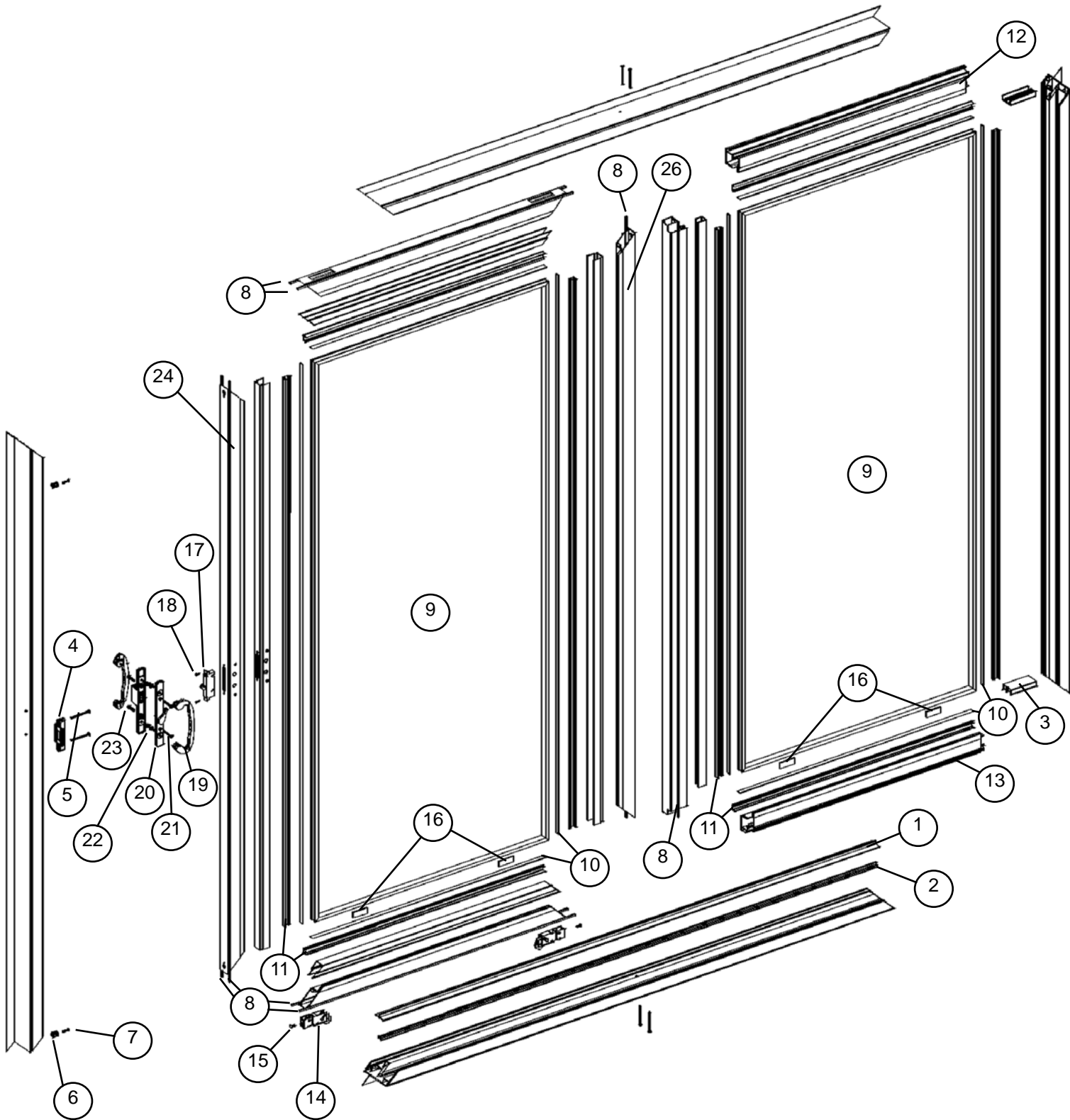
ATRTRIUM

WINDOWS AND DOORS

300 WELCOME CENTER BLVD  
P.O. BOX 1869  
WELCOME, NC 27374-1869

PART DESC: BRICKMOULD DOUBLE HUNG (DP-35)			
MATERIAL: N/A	AREA:	DATE: 02-13-2006	
DRAWN BY: MLS	SCALE: 1=1	WTG/FT:	DRAWING: EXP 450DH-449

# 312 Vinyl Patio Door



# 312 Vinyl Patio Door

## Frame

- 1. . . . . Roller Track
- 2. . . . . Screen Track
- 3. . . . . Sash Stop
- 4. . . . . Keeper
- 5. . . . . Keeper Screw
- 6. . . . . Bumper
- 7. . . . . Bumper Screw
- 8. . . . . Wool Pile

## Fixed Glass Panel

- 9. . . . . Insulated Glass
- 10. . . . . Glazing Tape
- 11. . . . . Glazing Bead
- 12. . . . . Snap in Head
- 13. . . . . Snap in Sill

## Handle Sash

- 9. . . . . Insulated Glass
- 10. . . . . Glazing Tape
- 11. . . . . Glazing Bead
- 14. . . . . Steel Roller
- 15. . . . . Roller Assembly Screws
- 16. . . . . Glazing Blocks
- 17. . . . . Lock
- 18. . . . . Lock Screws
- 19. . . . . Handle
- 21. . . . . Escutcheon Plate Screw
- 20. . . . . Escutcheon Plate
- 22. . . . . Handle Screw
- 23. . . . . Tube Bolt
- 8. . . . . Wool Pile
- 24. . . . . Lock Sash

T-Astrigal also available on 9' and 12' doors.